

Teacher Leadership Certification

Sonoma County of Education
October 22, 2016

 CENTER *for*
EDUCATIONAL LEADERSHIP
UNIVERSITY OF WASHINGTON • COLLEGE OF EDUCATION





Our Mission

The Center for Educational Leadership (CEL) is a nonprofit service arm of the University of Washington College of Education dedicated to eliminating the achievement gap that continues to divide our nation's children along the lines of race, class, language and disability.



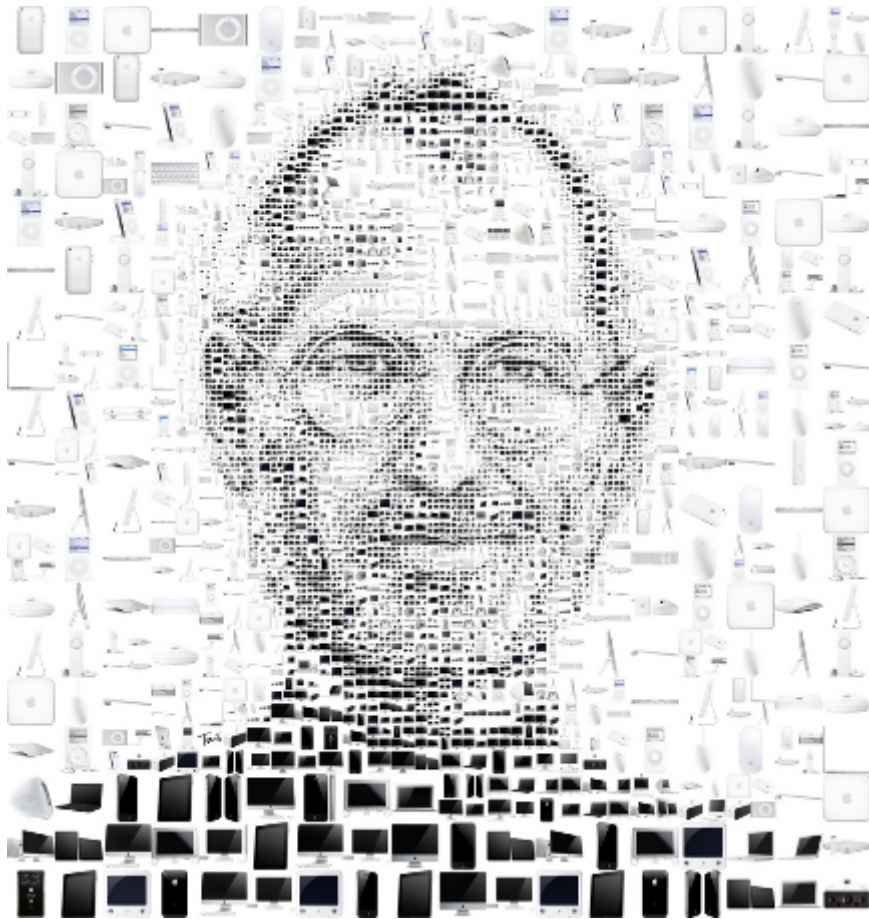
CENTER *for* EDUCATIONAL LEADERSHIP

UNIVERSITY OF WASHINGTON • COLLEGE OF EDUCATION

What is Leadership?



What is Leadership?



This photo, "Steve Jobs 2011 (white)" is copyright (c) 2011 Charis Tsevis and made available under [Attribution-Noncommercial-Share Alike 2.0 license](#)



This photo, "Tim Cook: Don't Look Back" is copyright (c) 2013 Charis Tsevis and made available under [Attribution-Noncommercial-Share Alike 2.0 license](#)



What is Leadership?



CENTER *for* EDUCATIONAL LEADERSHIP

UNIVERSITY OF WASHINGTON • COLLEGE OF EDUCATION

Impromptu Networking

What big challenge do you bring to this gathering?

What do you hope to get from and give this group or community?

From Liberating Structures



CENTER *for* EDUCATIONAL LEADERSHIP

UNIVERSITY OF WASHINGTON • COLLEGE OF EDUCATION

Appreciative Interviews

Tell a story about a time when you worked as a leader with others and you are proud of what you accomplished.

What is the story and what made the success possible?

From Liberating Structures



CENTER *for* EDUCATIONAL LEADERSHIP

UNIVERSITY OF WASHINGTON • COLLEGE OF EDUCATION

Leadership Personas

Hero?



Leadership Personas



Victim?

Leadership Personas

Villain?

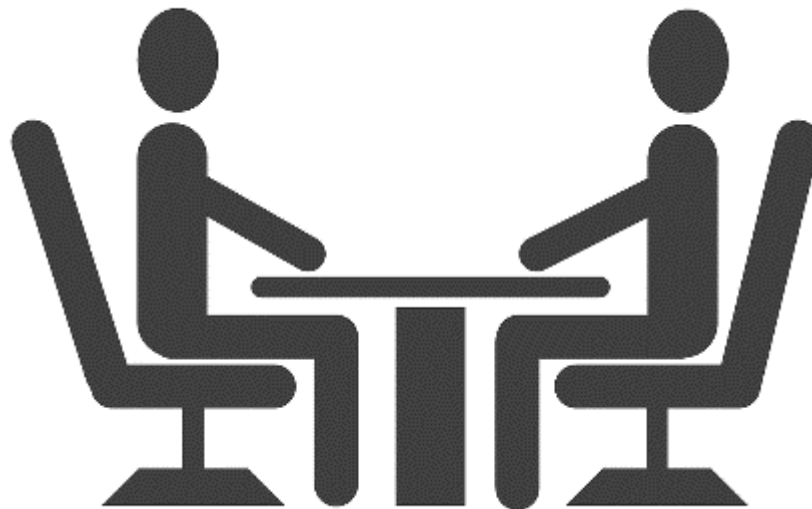


Identify your Predominant Persona



The Billions Institute

Persona Interview



The Hendricks Institute

Hopes

— & —

Fears

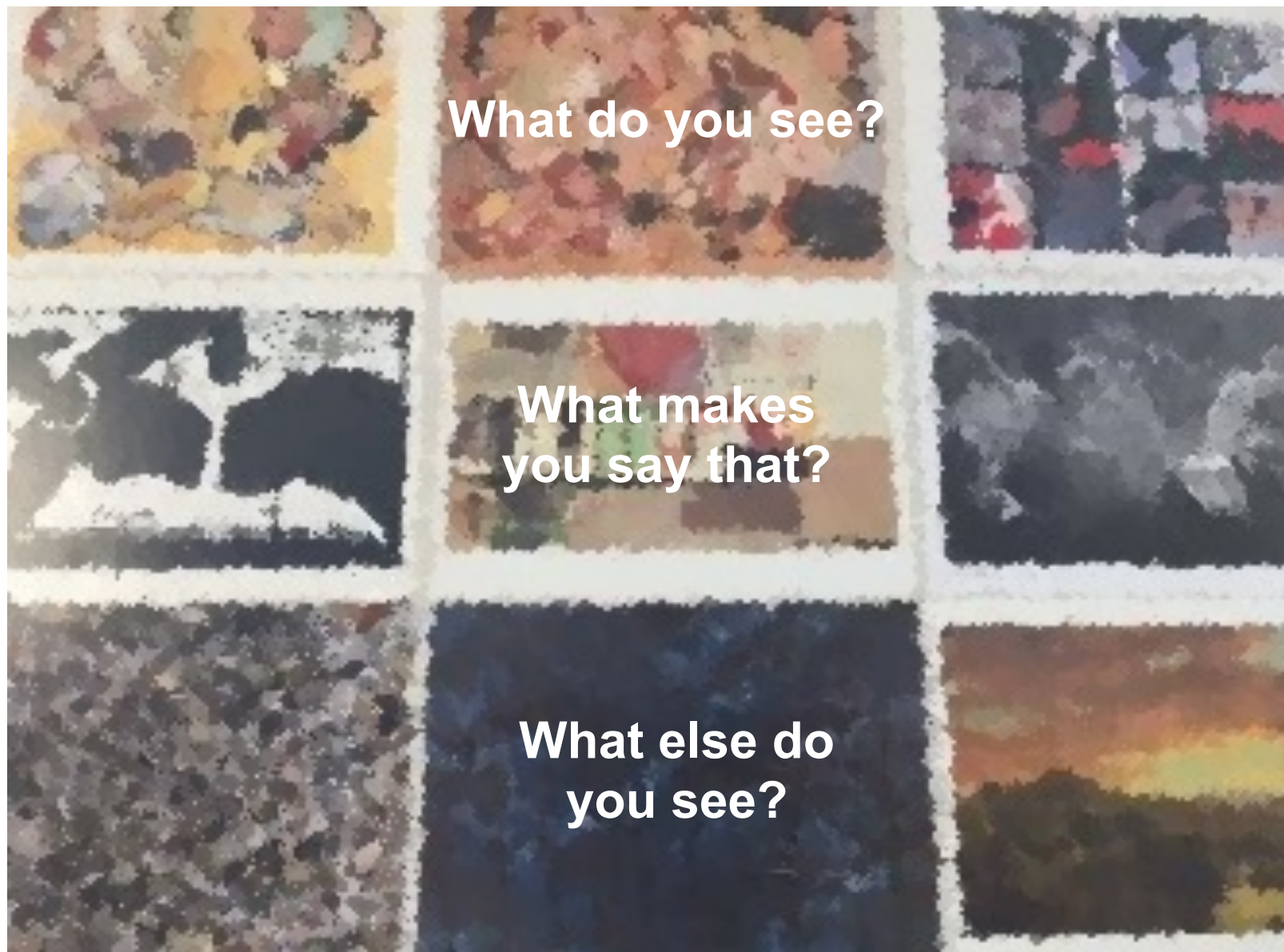
Identify the hopes and fears you have around your new role.



Teacher Leadership and a Strengths-based Stance

- Developing objectivity
- Learning to see, unlearning to judge
- Identifying about cans and verges





Foundational Ideas

1.

If students are not learning they are not being afforded powerful learning opportunities.

2.

Teaching is a highly complex and sophisticated endeavor.

3.

Practice of sophisticated endeavors only improves when it is open for analysis and critique.

4.

Improving practice in a culture that is “public” requires reciprocal accountability.

5.

Reciprocal accountability implies a particular kind of leadership to improve teaching and learning.

6.

Leaders cannot lead what they don't know.



Practicing A Strengths-Based Stance

1
Select a time
when one of your
fears surfaced

2
Describe the
interaction

3
Re-apply
objective based
thinking

4
Describe what
happened

5
Share what you
would do
differently



Hopes

&


Fears

Now, what are you thinking?



CENTER *for* EDUCATIONAL LEADERSHIP

UNIVERSITY OF WASHINGTON • COLLEGE OF EDUCATION




CENTER for EDUCATIONAL LEADERSHIP


UNIVERSITY OF WASHINGTON • COLLEGE OF EDUCATION

[HOME](#)
[CONTACT US](#)
[STORE](#)
[DONATE](#)
[LOG IN](#)
[SD ASSESSMENT LOG IN](#)

W


[About Us](#)
[Who We Serve](#)
[Services We Provide](#)
[Tools & Products](#)
[Blog](#)
[News & Events](#)






Discover the 5 Dimensions of Teaching and Learning™

GET IT NOW →



Explore the 4 Dimensions of Instructional Leadership™

GET IT NOW →




Use the Principal Support Framework's 3 Action Areas

GET IT NOW →

Successful Students Need Outstanding Teachers. Effective Leaders Make That Happen.

The Center for Educational Leadership helps districts close the achievement gap through effective instruction. But teachers can't do it alone: both school and district leaders have to create a culture of learning and support for teachers to excel. Our nationally recognized experts, working with research-based methods, help all levels of a school system improve achievement for all students.

www.k-12leadership.org



CENTER for EDUCATIONAL LEADERSHIP

UNIVERSITY OF WASHINGTON • COLLEGE OF EDUCATION

19